



Weatherseal Kit Installation

Installation Guide for Sealeze Garage Door Threshold:

Please read ALL directions before starting installation.

Installation conditions:

Install only on clean, dry concrete at temperatures above 40°F (5°C).
Remove existing weatherstripping from door bottom.
For best adhesion, rough up concrete surface with a wire brush before applying glue.
Not recommended for installation on asphalt, painted or treated surfaces, broken concrete or gravel.

Tools:

Tape measure
utility knife
pencil

Instructions:

1. With garage door open, center threshold between the garage door track (the channel the door rollers ride in). Trim to length with utility knife. (The “hump” side should be on the inside side of the door.)



2. Lower the garage door on top of the threshold's 2-inch level strip. Push the 45° hump against the back of the bottom of the garage door. Note: Notch threshold around door jambs, if necessary, to ensure the 45° hump is against the back of the bottom of the garage door.

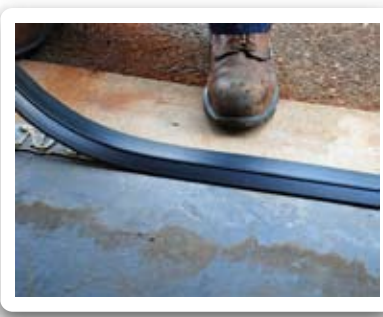


3. With the pencil, mark the inside edge of the threshold on the floor the full length of the threshold (from one door jamb to the other).

4. Carefully raise the door (without moving the threshold) and mark the outside edge of the threshold the length of the door. Rough up the area between the marks with a wire brush for best adhesion.



5. Remove the threshold and apply three rows of adhesive the full length of the door between the pencil lines as shown.



6. Replace the threshold between the pencil lines and firmly press into place. Carefully apply pressure to the threshold to ensure the adhesive spreads uniformly.



7. Inspect the threshold to make sure it is still between the pencil lines. The position can slightly adjusted for a short period of time. The length of time varies depending on ambient conditions.



8. Close the garage door to keep constant pressure on the threshold for twenty-four (24) hours.

ALLOW AT LEAST 24 HOURS FOR ADHESIVE TO DRY BEFORE DRIVING OVER.

Sealeze, A Unit of Jason Incorporated
8000 Whitepine Road
Richmond, VA 23237

© copyright 2009 Sealeze, A Unit of Jason Incorporated